

Pearly Beach Village Newsletter

October 2014

Website: www.pearlybeachratepayers.co.za

Welcome to the October edition of our newsletter for homeowners of Pearly Beach. The contents of this newsletter have been compiled and written by members of both the Ratepayers' Association and the Conservancy. Their aim is to bring you village-related matters, events, local Municipality issues, and various articles of interest and informative views that are pertinent to our Village. We hope you find it interesting to read!

The Village Green continues to progress nicely...

New directional signs have been made to point you in the direction of the Fynbos Garden section. These signs were all handmade and carved by local Pearly Beach residents, happy to lend a hand and donate their skills!

More wooden benches have been erected, and a lapa has been placed near the children's play area to provide shade for those watching the little ones play.

A fantastic sundial has been handmade, again by a very skilled local, and it even tells the right time!

So a big thank you to all those that have helped with the garden, its greatly appreciated.

The garden, itself, continues to grow and flourish under the guidance of Heilie Mostert. You can see lots of new and exciting plants coming through and, because of the increase in plant diversity, so the bird and animal life flourishes. Just take a look in the actual Fynbos Centre at the information booklet there to see pictures of some of the new sightings and finds...and of course there "are" the Peacocks!



Recreational Diving

On the first of February 2008 the Minister of Agriculture, Forestry and Fisheries introduced a ban on recreational diving in certain areas along the South African Coastline; Pearly Beach was one of these. The reason given was that the ban on diving was one of the government's measures to combat perlemoen poaching. Apparently the rationale for this ban was that without recreational divers in the water it would be easier to apprehend poachers, as they could not then claim to be recreational divers.

Your association is of the opinion that the ban on recreational diving has not in any way contributed to a reduction in the poaching of perlemoen in our area. Reports in the press showing the tons of perlemoen that the South African Police Service have confiscated from vehicles leaving the area, would indicate that the poaching activities have increased rather than decreased during the time that the diving ban has been in place.

We are therefore of the opinion that the ban imposed by the minister has not achieved its objective of eradicating or reducing perlemoen poaching in the Pearly Beach area but has merely punished the honest by no longer allowing holiday makers or residents to dive in the sea from our beaches. This has then also had a detrimental effect on tourism in our area. Consequently our Ward Councillor has started an initiative to request the Minister to lift the ban on recreational diving in Pearly Beach. We will keep you informed of the progress made in this regard so keep your eye on the Pearly Beach Ratepayers' website at pearlybeachratepayers.co.za

Pearly Beach Water Mains

Burmar Civils, (the contractor appointed by the Overstrand Municipality to undertake the second phase of the replacement of the old 50mm water mains with 110 mm pipes) is now nearing the completion of this project. During this project water mains were replaced in Boundary Rd, The Crescent, Spin, Arc, Steep, Twist, Loop, Gousblom, Duine and Heide Streets, Marine Rd, Charlie van Breda Drive (from Harbour Rd to Therondraai), Therondraai, Puren Rd and Arikreukel Street. As soon as all the properties in these streets have been coupled to the new water main, the final clean up and repair of roads will be undertaken by the contractor. In total 7,5 km of water main was replaced during this phase at a cost of R3,85m. When added to the first phase of the Water Main Replacement Project, a total of 11 km of pipe has been replaced at a cost of R 5,9m in Pearly Beach over the past two financial years.

Certificate of Excellence Award

Annually the Executive Mayor of the Overstrand acknowledges outstanding contributions from members of the community by the awarding of certificates of excellence. The recipients of these awards are not only talented individuals, but are willing to use their gifts and talents to benefit the communities in which they live. This year one of our very own was commended for his work here:

Jason Stonehewer is an active participant in nature conservation and the conservation of our marine ecology. At his own cost he bought and set up a small building in Pearly Beach as a Marine Information Kiosk where a large variety of shells and sea creatures found along our coastline can be viewed. He gives educational talks on the environment and conducts informative guided hikes along the coast from Die Dam to Hermanus. He also trains local residents to operate as beach guides.



It's a duck's life - some interesting facts about keeping and raising Pekin Ducks

We first became interested in Pekin Ducks when snails began an intensive onslaught on our garden at Pearly Beach. Neither of us knew much about waterfowl, but we had to learn quickly! Within two months of acquiring a drake, and a duck, aptly named Sir Francis & Lady Drake respectively, we were blessed with ten bright orange balls of fluff! We had no idea how to feed them or for that matter, what their particular needs were. Here are hopefully some facts you might find helpful if you, like us plan, to keep or raise Pekins.

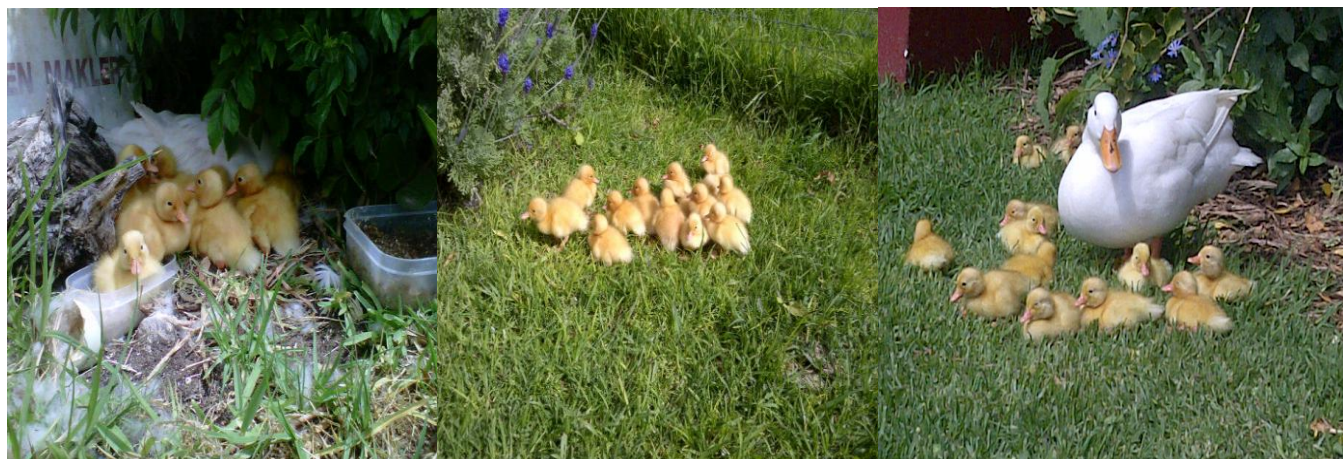
Pekins are of Chinese descent and the original ducks were black. They are also the fastest growing of all duck species, being almost fully grown at 30 days. Within ten weeks they are ready for the pot (somehow ours have never found their way there!) The collective name for a group of ducks is a "raft" or a "team."

We have found the best feed for Pekins is Groeimeel (Growing meal available from the co-op) mixed with uncooked white mieliemeal - the mixture should be slightly moistened and fed two to three times a day. There is a constant contest for food in our garden from other birdlife, including the francolins (or Spur fowl as they are now called and peacocks) so it is important to ensure the ducks get sufficient food when the others are not around. At 30 days and older, a finisher product can replace the groeimeel (our ducks still prefer groeimeel though, probably because it is more expensive) and continue to be mixed with uncooked mieliemeal. Pekins are not partial to dry food, so we keep the mixture well moistened. Very finely chopped vegetable skins can be given in addition to this feed. But Ducks should never be fed bad or rotten food. Cooked rice is also a great favourite when mixed with their normal food. Ducks also enjoy lavender leaves, dill, fennel and daisy bushes! They are great foragers and will happily spend the day wandering around the gardens in the neighbourhood, eating insects and their great favourite, small snails. I would like to appeal to gardeners at Pearly Beach not to use snail bait, as this can affect other wildlife in the area including birds, rather get a pair of ducks, they are cheaper to raise! Another warning **DO NOT FEED BREAD OR BREADCRUMBS TO ANY DUCK BREED!** Bread has no nutritional value for ducks and can even cause fatalities. So the popular pastime of feeding ducks with breadcrumbs at public parks should also be discouraged. Ducks will eat seed, but this shouldn't form the main part of their diet. Ducks need deep water bowls, not only to drink water but to clean their bills, their nostrils and their eyes. Failure to provide adequate deep containers of water for this purpose can result in ducks succumbing to respiratory illnesses.

Pekins have an average lifespan of eight to nine years. These ducks become sexually mature around six months and will begin mating at between 7 and 8 months. Hens generally find a secluded place to nest, usually in thick undergrowth or under a bush. She will lay between 6 - 15 eggs, usually as many as her wings will cover. Don't be fooled either by the fact that she doesn't initially sit on the eggs, she will lay each day until she has a full clutch and then brood. Incubation is around 28 days. The hen usually leads her day old or two day old chicks to the nearest source of water for their first swimming lesson! Ducklings receive the oil they need to make their feathers waterproof from their mother's wings and are able to swim immediately if raised naturally. If you plan to keep Pekin ducks - a male and female are perfect. Alternatively one drake to every 4 - 6 females, otherwise you could have a fight on your hands, with the drakes vying with each other for the affections of the females!

On the whole Pekins are healthy ducks, but they do have some quirks. It is important to separate the drake from the duck and the ducklings as soon as they hatch, as the Pekin Drake has a black heart and harbours a tendency to drown his offspring or peck them to death. We get the expression "pecking order" from ducks! We have found after two weeks the ducklings can be introduced to the drake, or in our case, drakes. Our last batch of ducklings were somehow not threatened by any of the drakes in their enclosure and happily co-habited. This could possibly be as a result of these particular adult ducks raising each other as young when they were abandoned by their own inexperienced mother.

Duck eggs are highly nutritious and are excellent for baking! Happy duck keeping! - *Shirley Coetzee*



Pearly Beach Waste Transfer Site (Broadway Street)

The disposal of household and garden waste is still an issue within the village, despite that fact we have this site at our centre. People are still unsure what they can and cannot dispose of and at what cost, so please familiarize yourself with the guidance below...

Residents do not now require a permit to use the facility and it is free to dispose of garden refuse (branches, garden cuttings, grass cuttings etc). The indicated quantity per day is 1 ton (comparable to a bakkie load) The opening times for the Pearly Beach site are,

Monday - Friday 8am - 5pm - Saturday / Public Holidays - 11am - 4pm - **Sundays ...Closed.**

Larger loads or Contractors must take the waste to the site at Gansbaai where the following tariffs are applicable-

1 / 2 tons R170 - 2 / 3 tons R255 - 3 / 4 tons R340 - 4 / 5 tons R424 - 5 / 6 tons R594 - 7 / 8 tons R668 - 8 / 9 tons R753 - 9 / 10 tons R838

Please don't forget it is against the Municipality by- laws to place your waste out side your house/plot on any day except for Mondays. Law Enforcement Officers will be checking to see that no one leaves waste material out on any other day and fines may well be issued if you do so.

Gansbaai Tourist Centre

In September Gansbaai Tourist Bureau opened their new refurbished information centre and offices in Gansbaai.

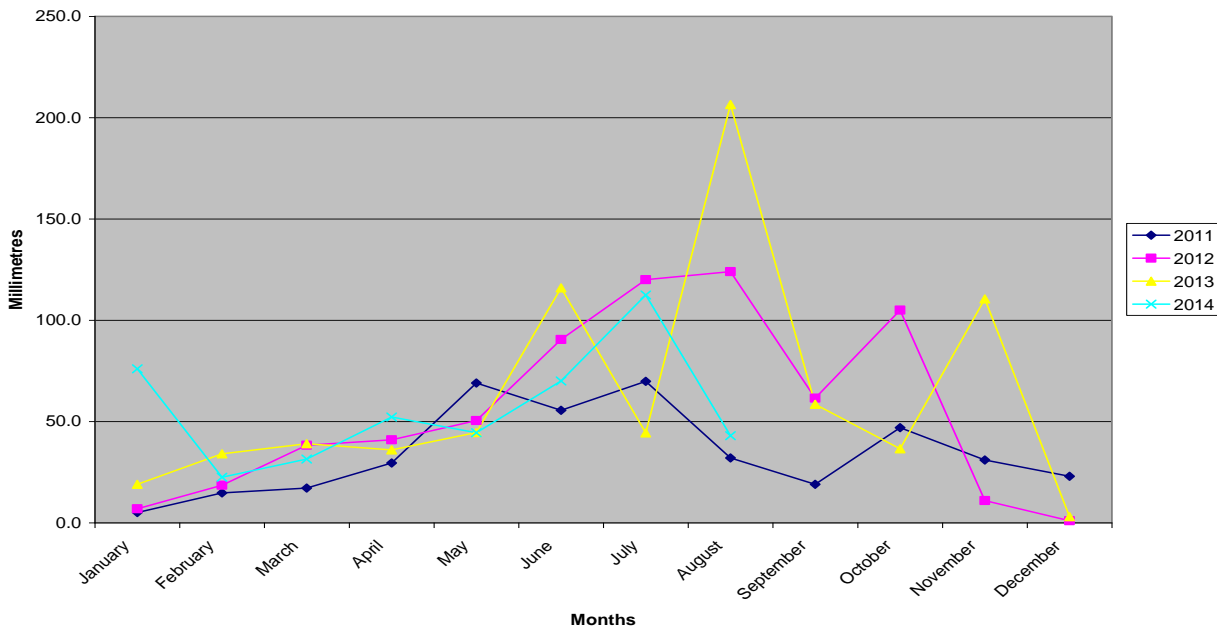
The improved facility has been designed to improved interaction between visitors to the centre and the Tourism staff.

The Bureau has for many years supported us and helped financially with promoting village events and sponsoring items like the Affaire banners, and they even find time to attend our functions.

So this year it was decided that the Pearly Beach Ratepayers Association would formally join and become a member of the Tourist Office.



RAINFALL



Rainfall in Pearly Beach

Above is a graph of the monthly rainfall in Pearly Beach from the year January 2011 to date. This has been compiled from daily readings taken by me purely for my personal interest.

I hope you find it interesting and informative, and that it might help you plan your next visit!

- Statistics compiled by Steve Peck

Angling Club News

Pearly Beach Rock and Surf Anglers have been rather successful with their fishing efforts this year. To date the following fish have been caught-

Galjoen 79-White Steenbras 14- Cob 109- Elf 3- Blacktail 6-Mussel Cracker 3, total weight 552.2kg

The Pearly Beach Club also held a fundraiser this year in the form of a BIG DRAW with a winning prize of **R10 000**. The draw took place on Saturday 4th October during a social evening at the Club. Karen Hoogendijk one of our lady Anglers was the lucky winner! - Dirkie Kotze won the Sheep and Jan Swart a box of Brandy. A further 17 lucky draw prizes were also drawn.



Photographed left:

Wouter Meiring (Chairman),
Mike Lamb (President),
Carla Roelofse (Club Manager),
Karen Hoogendijk (Big Draw
Prize Winner) and Isolde Smith
(Secretary)



Lethal traps for wildlife

Extra fishing line bins provided by Dyer Island Conservation Trust have been placed at strategic points along the local shoreline, and Pearly Beach being a popular fishing spot has received its fair share. Each non-permanent bin is there not only for fishermen to place their discarded line in, but also for general beachgoers to collect any potentially lethal fishing line found while walking the coast. These bins are serviced every month by the Environmental Department of the Municipality, and all fishing line is then weighed and a data base is being compiled which records the weight of line collected from each coastal area.

A lot of work, effort and money is going into this initiative in order to prevent a terrible suffering to a wide variety of animals caught in this unintentional man-made trap. Therefore please do your part and support this worthy effort and be on the look out for fishing line and dispose of it in these bins.

- Jason Stonehewer



Forthcoming Events

DATES TO DIARISE

- | | |
|--------------|--|
| 15 November | The Pearly Beach "Affaire" on the Village Green |
| 13 December | Pearly Beach Angling Club Year end function and prize giving |
| 17 December | Pearly Beach Conservancy AGM |
| 20 December | Conservancy Morning Market on the Village Green |
| 21 December | Christmas Carol Celebration on the Village Green |
| 25 December | Christmas Lunch at various establishments in the Village |
| 29 December | Pearly Beach Angling and Recreational Club Annual General Meeting and election of 2015 Committee |
| 30 December | Pearly Beach Ratepayers' Association Annual General Meeting and election of 2015 Committee |
| 31 December | New Year's Eve Dance – Elvis will be back in Town with his Oldies but Goldies Show |
| 4 April 2015 | Pearly Beach Dutch Reformed Church Fete |

Milkwood Trees

Have you wondered why Milkwood trees (*Sideroxylon inerme*) sometimes have brown branch tips? A recent specialist analysis of samples from the Pearly Beach area has shown that a fungus might be the cause. This fungus is quite common in useful plants such as mango and avocado. There does not seem to be a real means of controlling it, but further spread can be reduced by pruning away the dead bits, provided you can get to them, and sealing the wounds, the dead branches will remain dead, but the sealed branch ends hopefully will stop the further spreading.



A Word in Edgeways

Greetings from our beautiful village, nestled here in the Overstrand!

We have pleasure in advising that following the retirement of Cllrs Pieter Scholtz and Ben Soloman, the Executive Mayor of the Overstrand, Cllr Nicolette Botha-Guthrie has restructured her Mayoral Committee, reducing the committee by one member and in so doing reducing the cost to the Ratepayers of Overstrand by one member's salary. Cllr Dudley Coetzee was the councillor appointed to the Mayoral Committee.

The restructured Mayoral Committee is as follows:

Deputy Executive Mayor - Cllr Rudolph Smith, Cllr Smith has also been appointed as the Chairman of the Infrastructure and Planning Portfolio. Cllr Phillip Appelgrein retains the portfolio of Management Services and in addition, he will now also be responsible for the portfolio of Protection Services. Cllr Moira Opperman takes over the portfolio of Community Services and Cllr Dudley Coetzee was appointed as the Chairman of the portfolios of Finance, Local Economic Development and Tourism.

The Pearly Beach Ratepayers' Association takes this opportunity of congratulating each one on their new appointment. In particular our good wishes accompany our own Ward Councillor for Ward 11, Dudley Coetzee!

The Association plans to host a **Christmas Celebration** this year and would like to extend an invitation to everyone to join us for an hour of **Carol Singing and Spiritual upliftment on the Village Green at Pearly Beach**. Proposed date is **Sunday, 21 December, 2014 at 19h30**.

Shalom
Shirley

Ratepayers' website

www.pearlybeachratepayers.co.za

Secretary admin@pearlybeachratepayers.co.za

Chairperson info@pearlybeachratepayers.co.za

Conservancy

Secretary smfuchs@hermanus.co.za

Chairman stonehewerj@gmail.com

We hope you have enjoyed the next official newsletter for you, the homeowners of the village - compiled by the Ratepayers' Association and the Village Conservancy Committees.

As before, we have tried to keep you updated with current events within the village, and forthcoming attractions that are planned for the rest of this year.

As always, we welcome comments on items to include in further newsletters, and suggestions can be e-mailed to our Secretary at the e-mail addresses above left.

Lastly, we urge everyone reading this to ensure you are up-to-date with your membership subscriptions. We really need your support in this way, and it will mean that we can continue to improve our Village in a gentle and caring manner. - Thank you.